



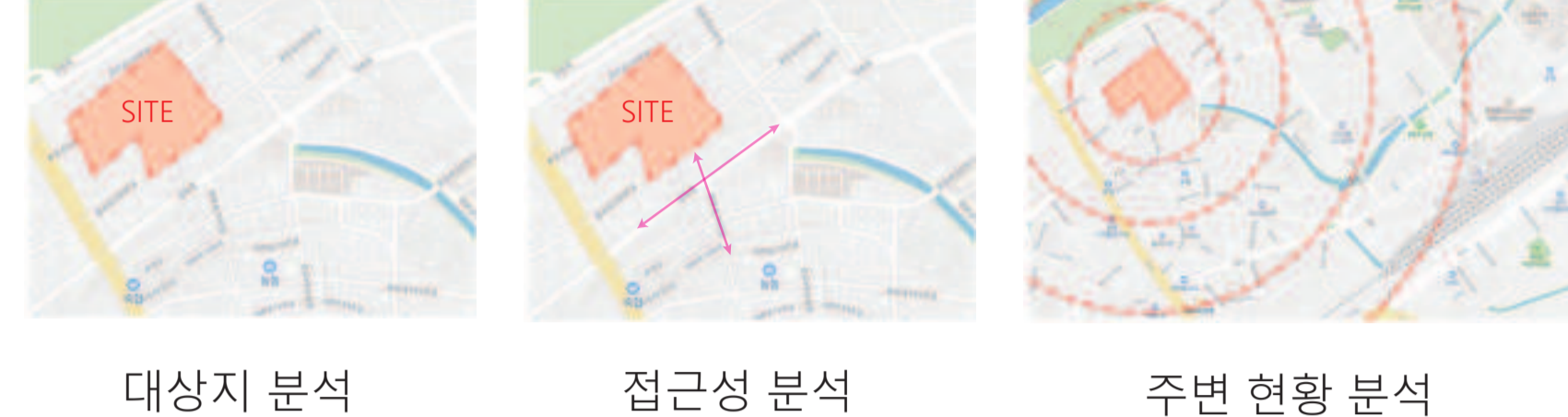
SYNOPSIS
 대지 위치 : 충청남도 논산시 대교동 62-2번지 일원
 대지 면적 : 17,097 m²
 지역/지구 : 도시지역, 제1종일반주거지역
 건축면적 : 2,133 m²
 연 면적 : 15,269 m²
 건 폐 율 : 12.4 %
 용 적 륜 : 89.3 %
 규 모 : 지하1층, 지상3층
 주요 구조 : 철근콘크리트조
 주 자 : 152대, 장애인주차 4대

“히히낙락 화지지구”
 논산시 도심 재창조의 거점, 사람중심복합문화쇼핑센터

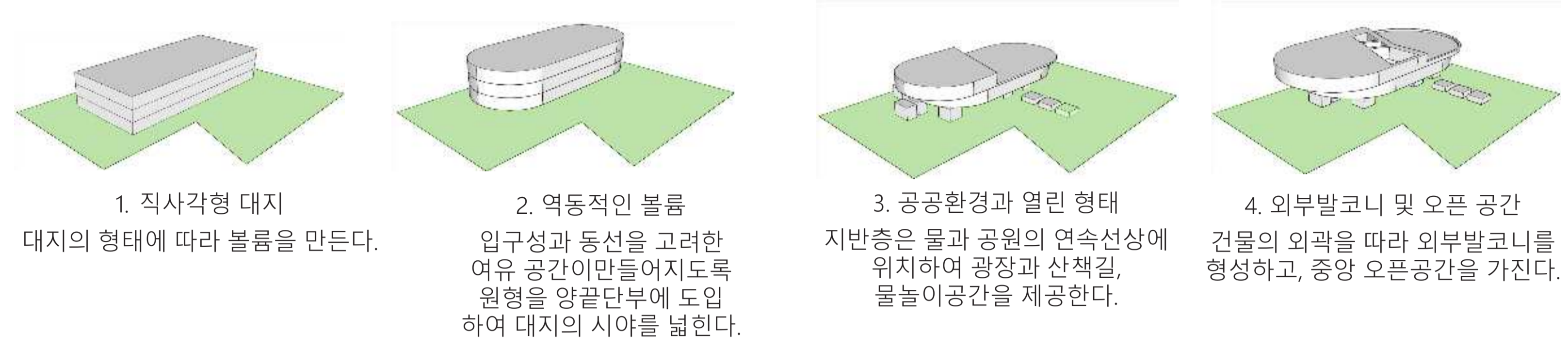
PROLOGUE

Since there is no large-scale complex shopping mall in Nonsan-si, the situation continues to be so uncomfortable that people have to go shopping in nearby large cities such as Daejeon and Buyeo. Accordingly, Nonsan-si will create a shopping center that can provide various products and services through plans to promote local consumption and revitalize the local economy through cooperation with businessmen to revitalize the local economy and improve shopping conditions for important residents.

SITE ANALYSIS



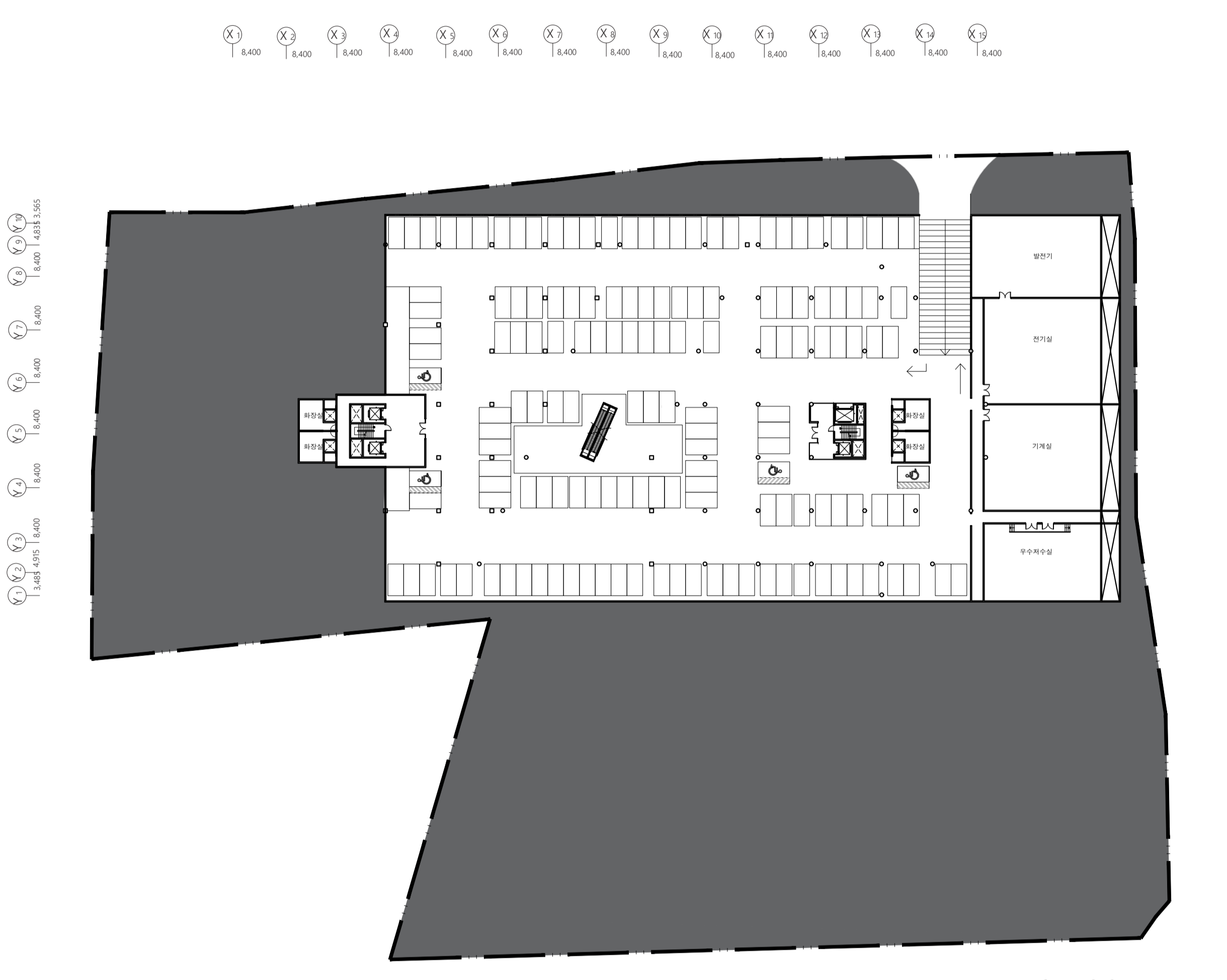
MASS PROCESS



PROGRAM

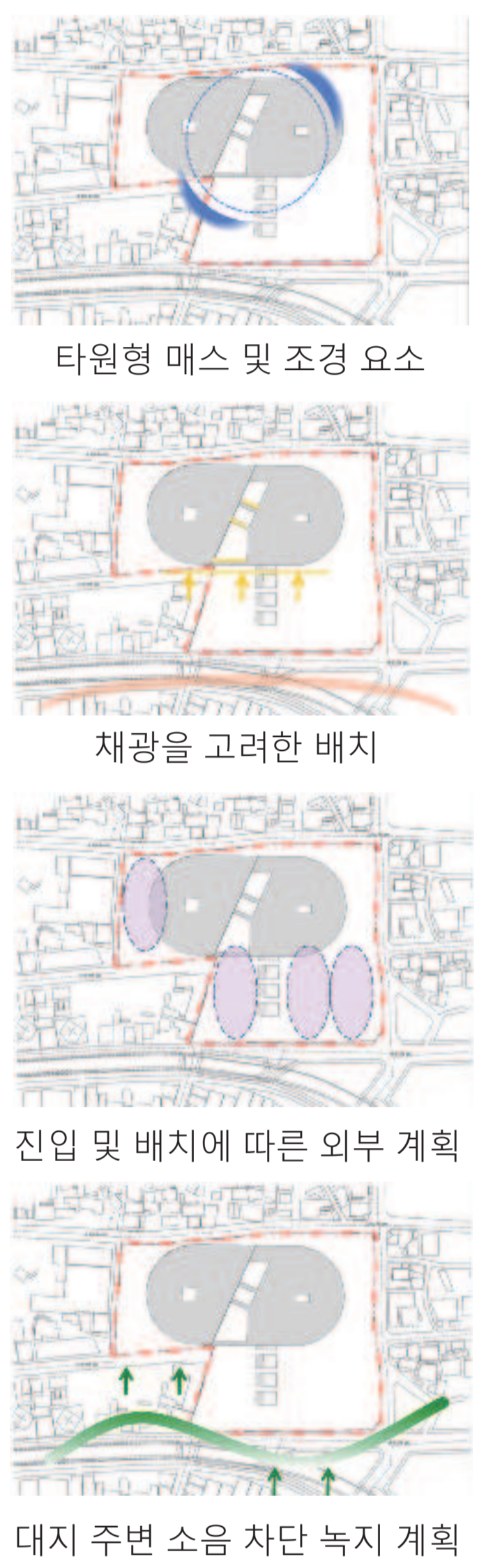


PLAN SCALE 1/600

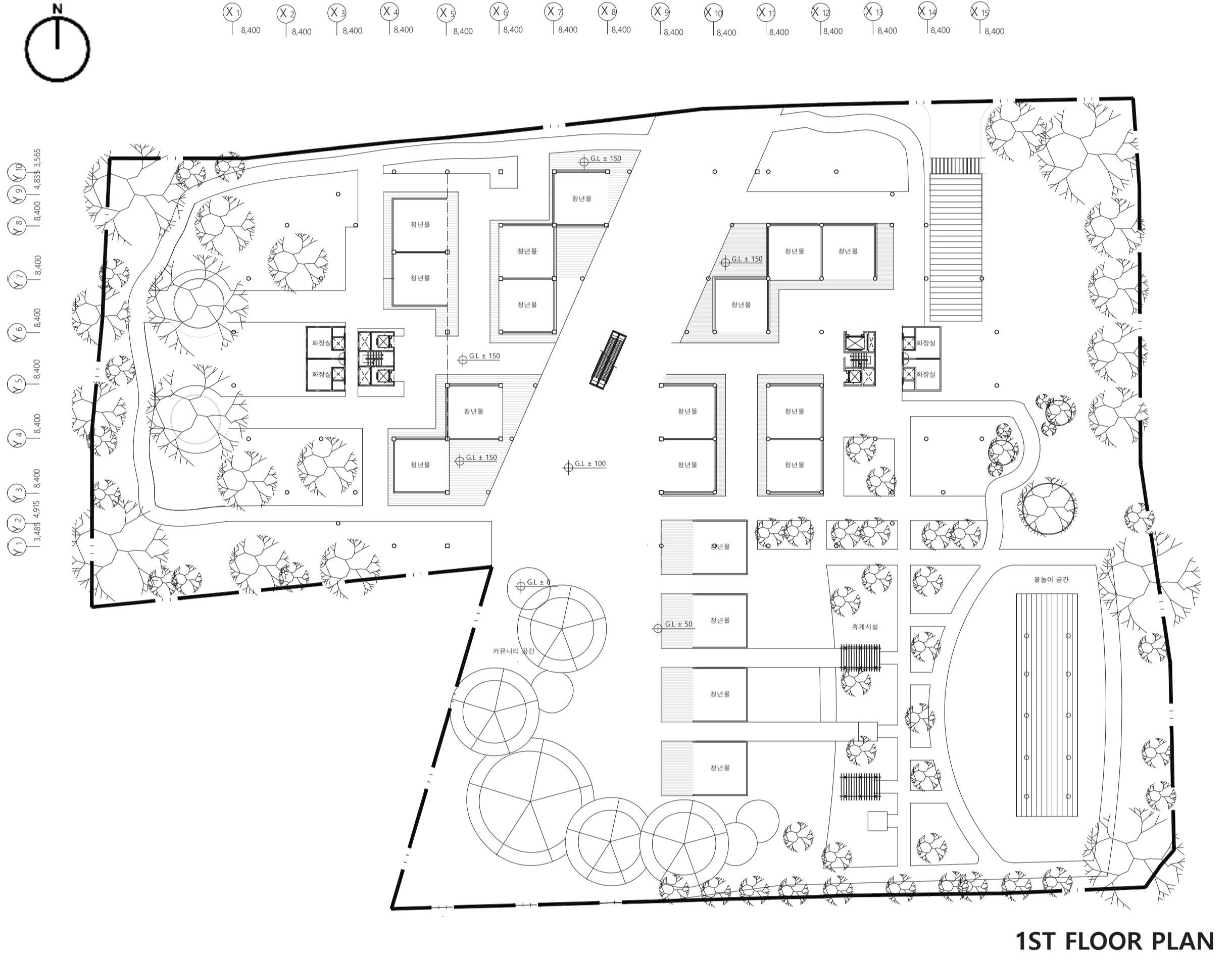
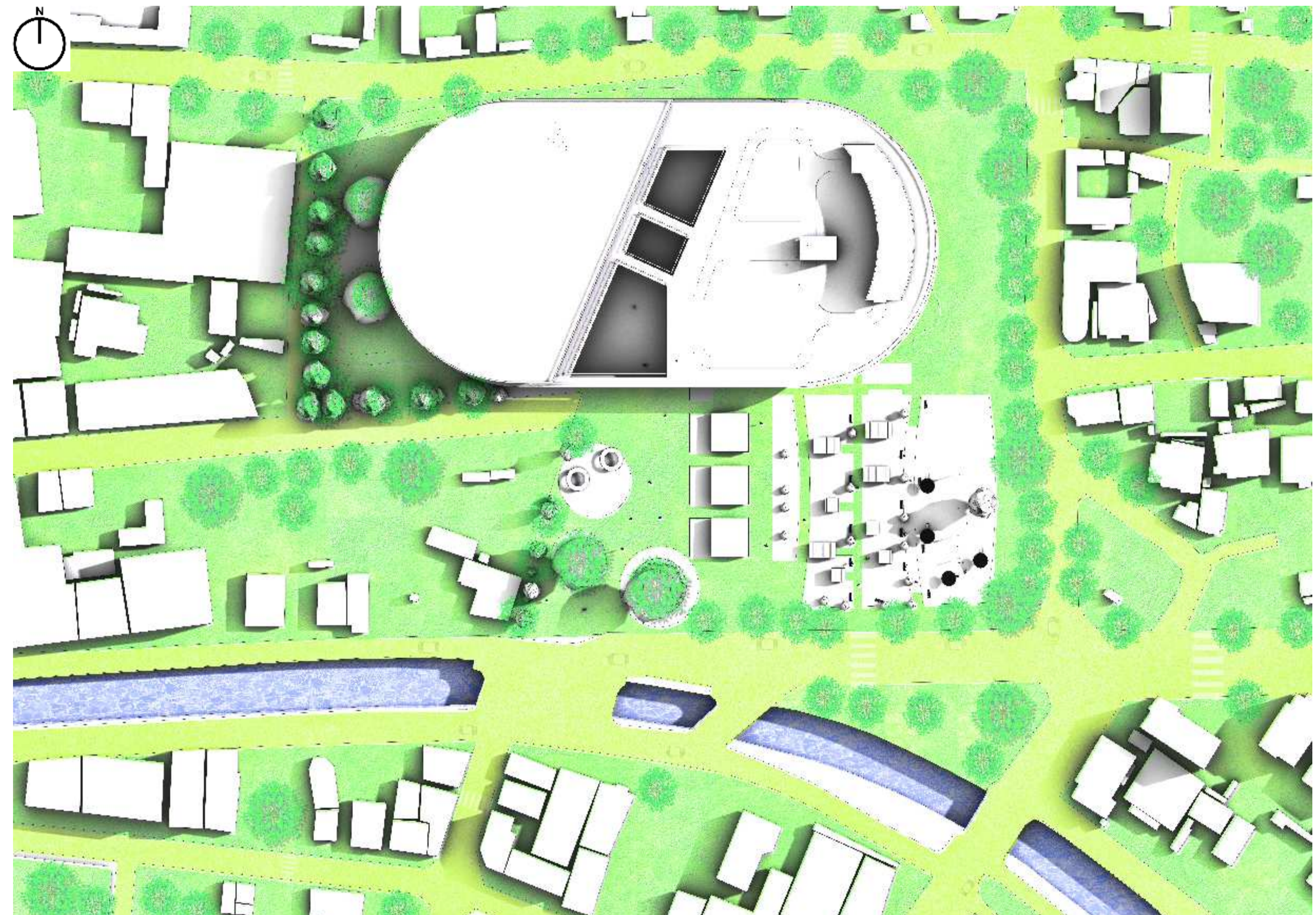


B1 FLOOR PLAN

LAND USE PLANNING

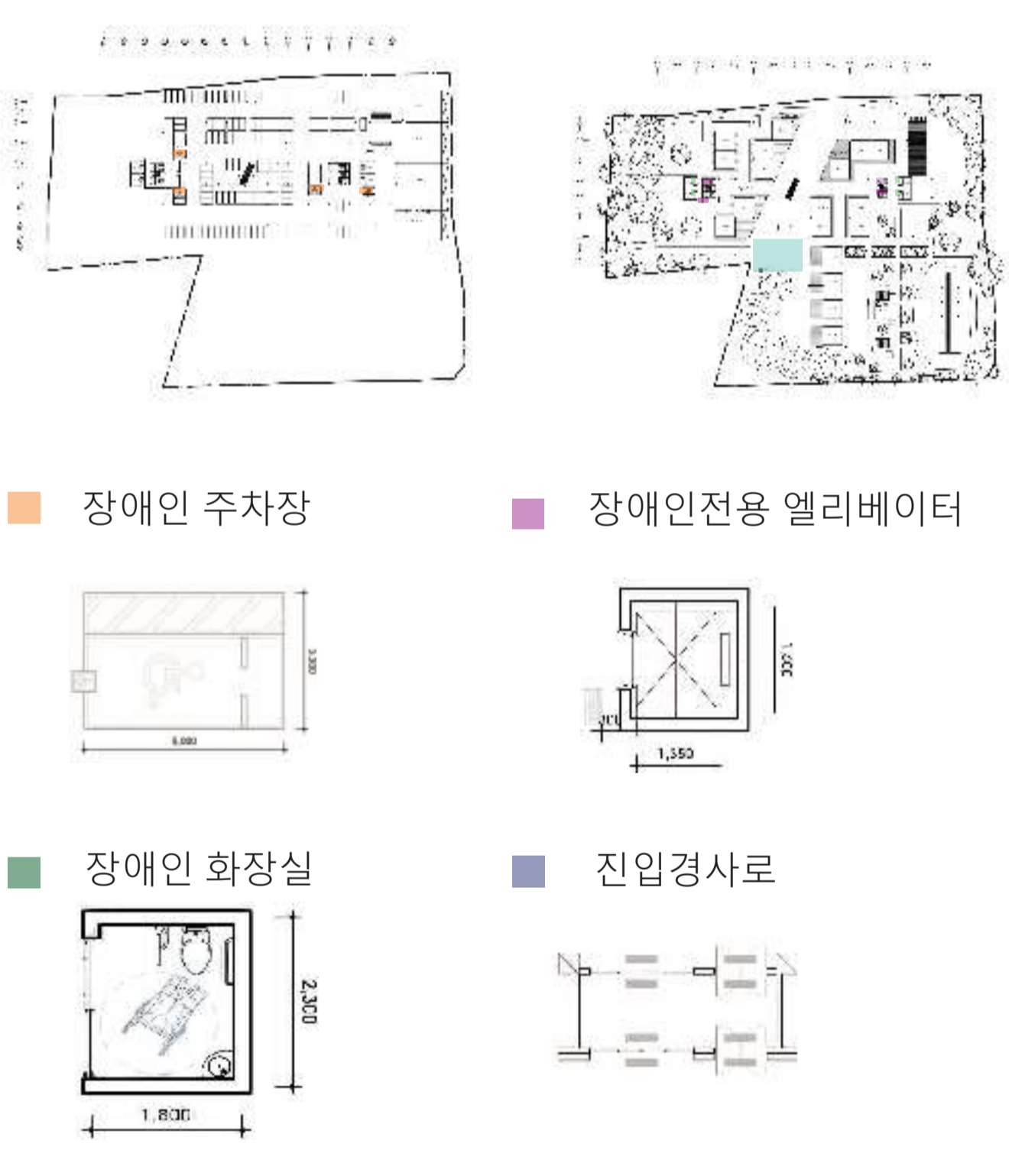


SITE PLAN SCALE 1/500

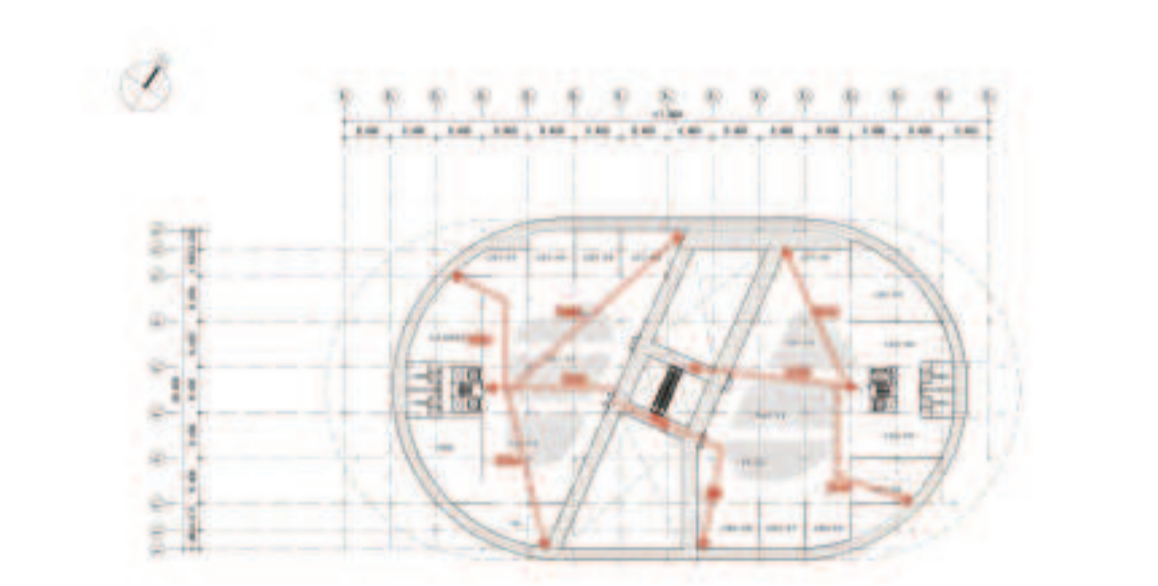


1ST FLOOR PLAN

BARRIER FREE DESIGN



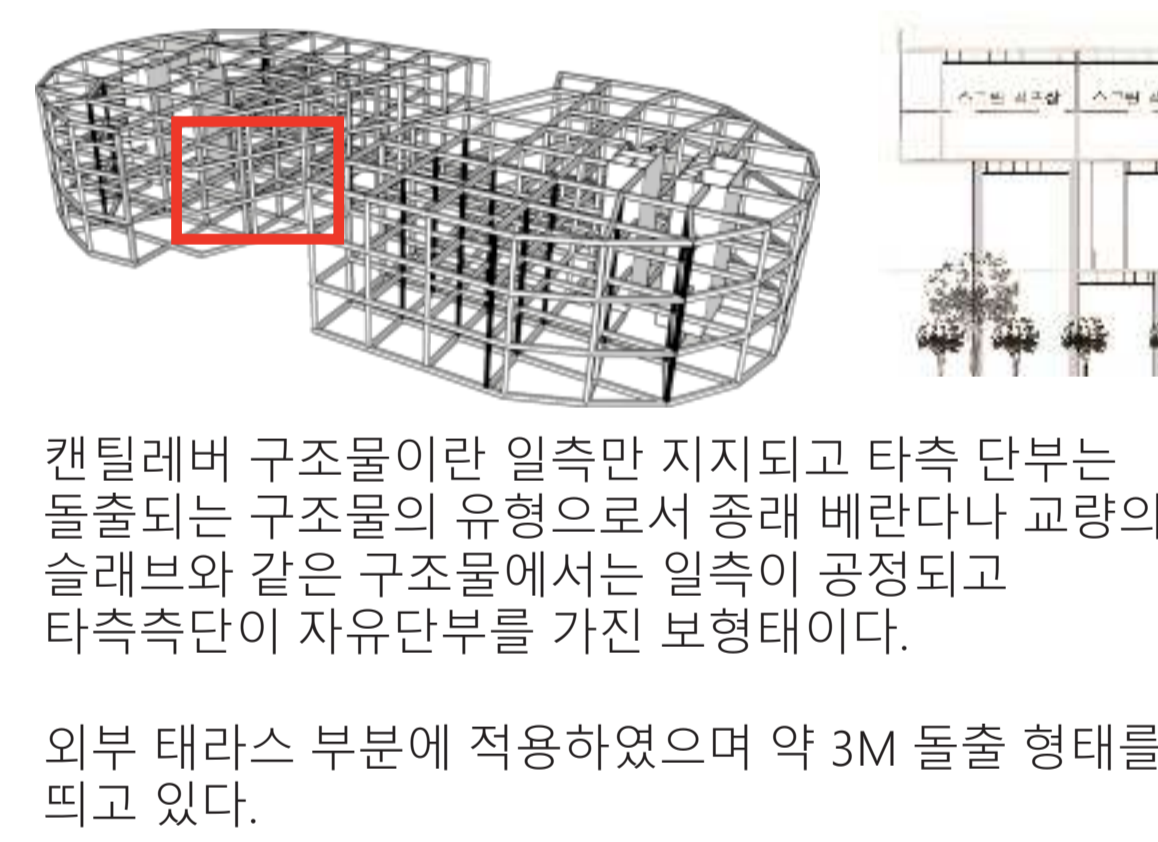
EVACUATION PLANNING



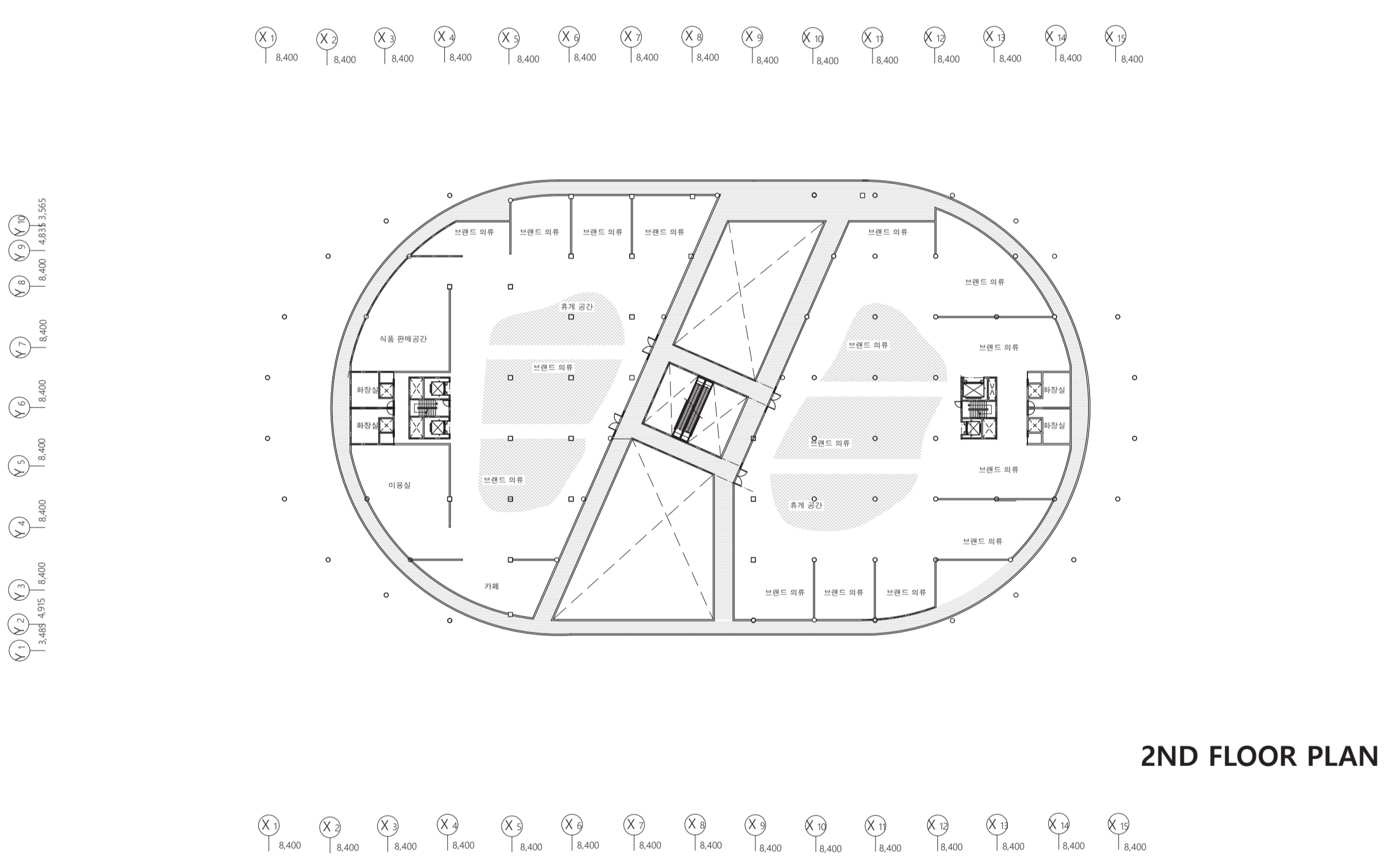
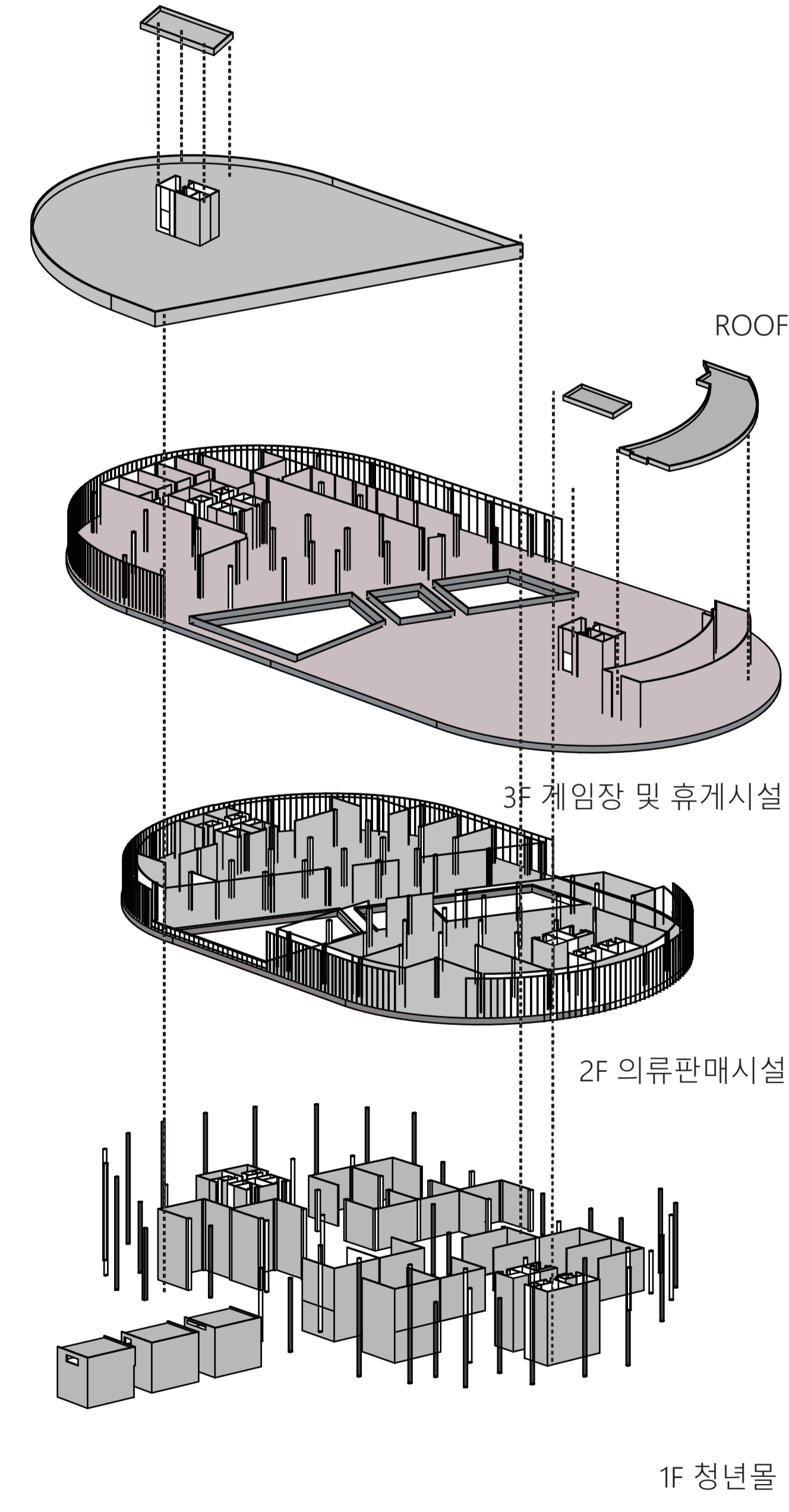
FACILITIES



STRUCTURE

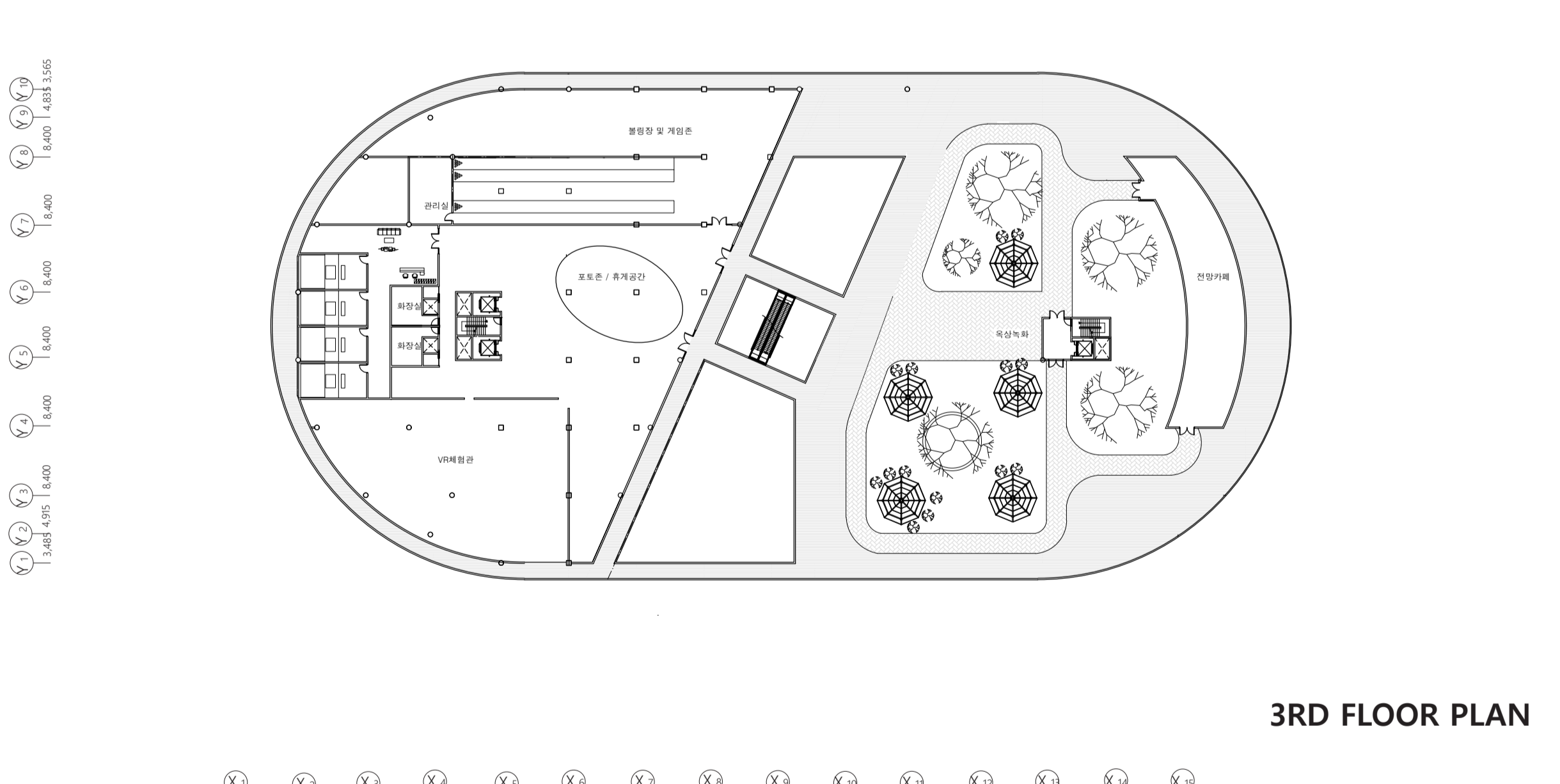


ISOMETRIC

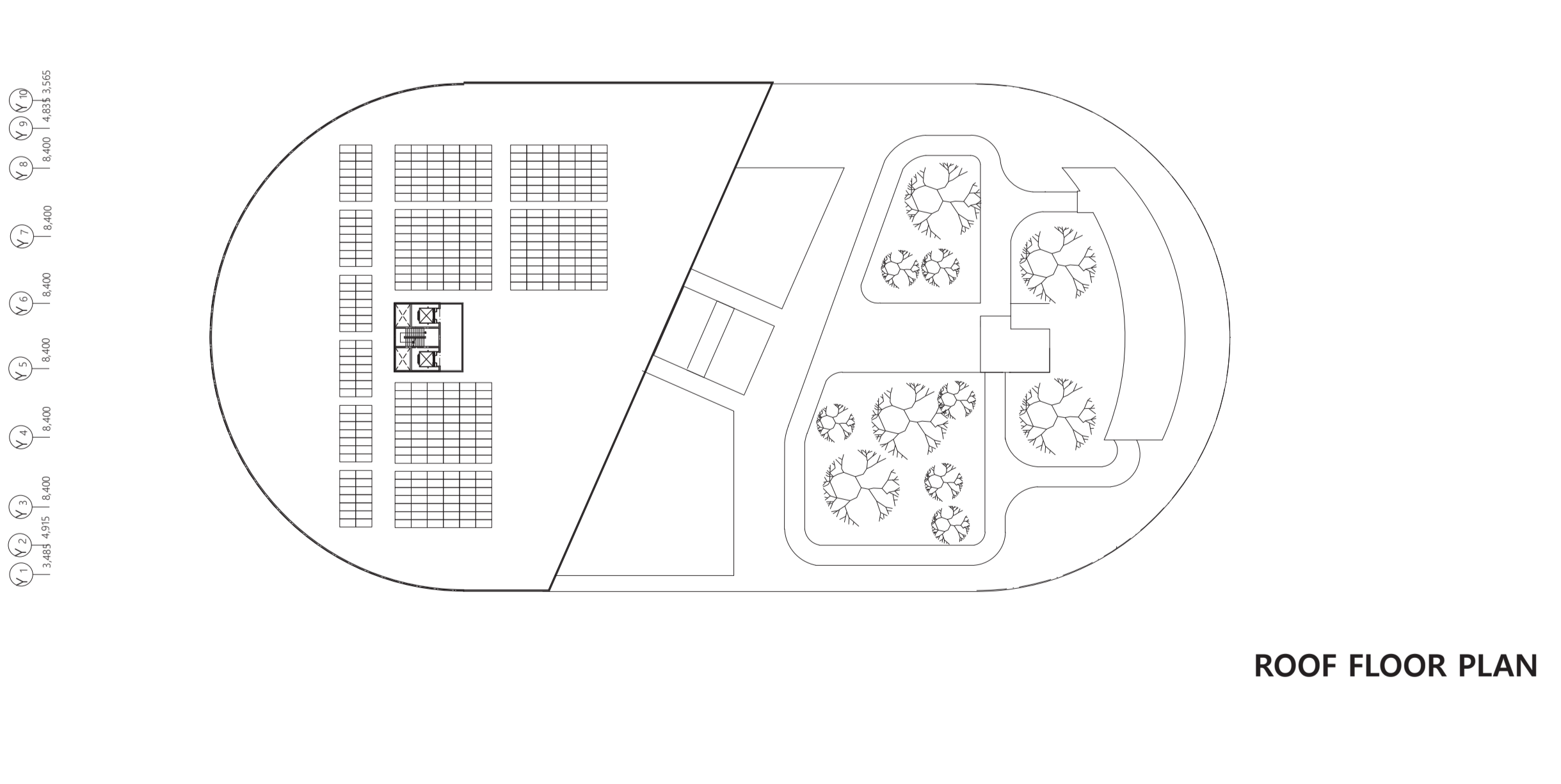


2ND FLOOR PLAN

PERSPECTIVE

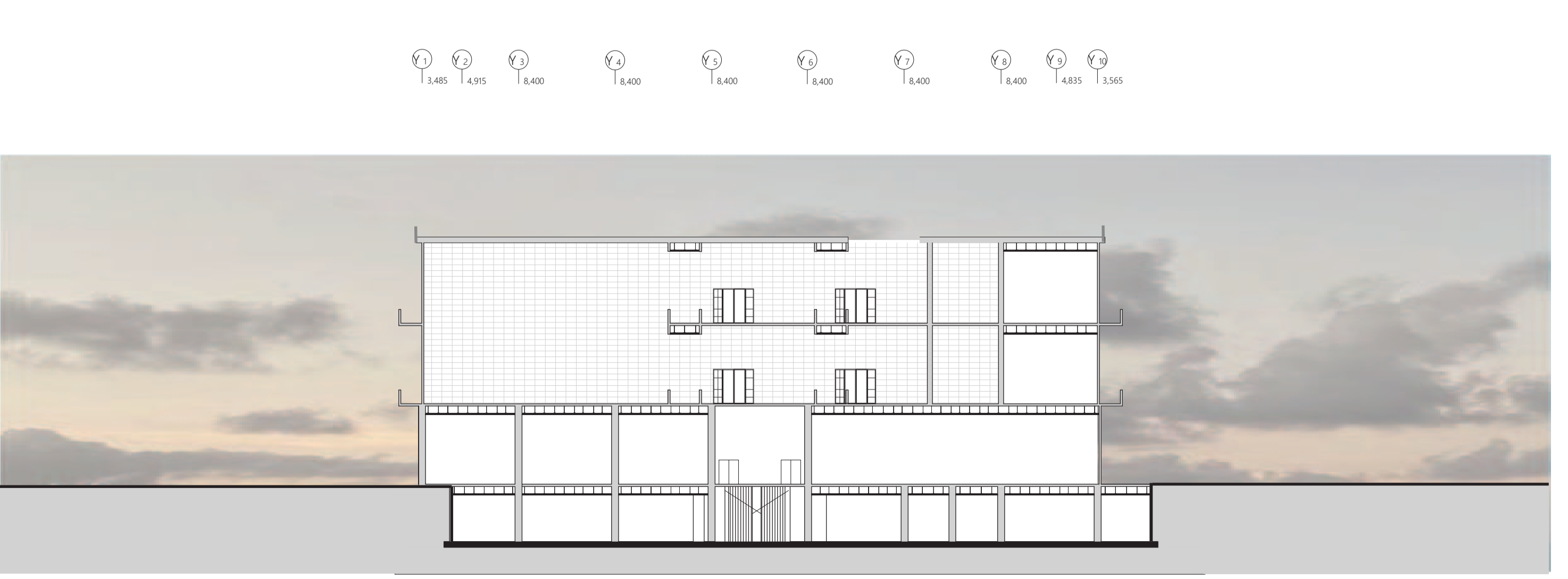
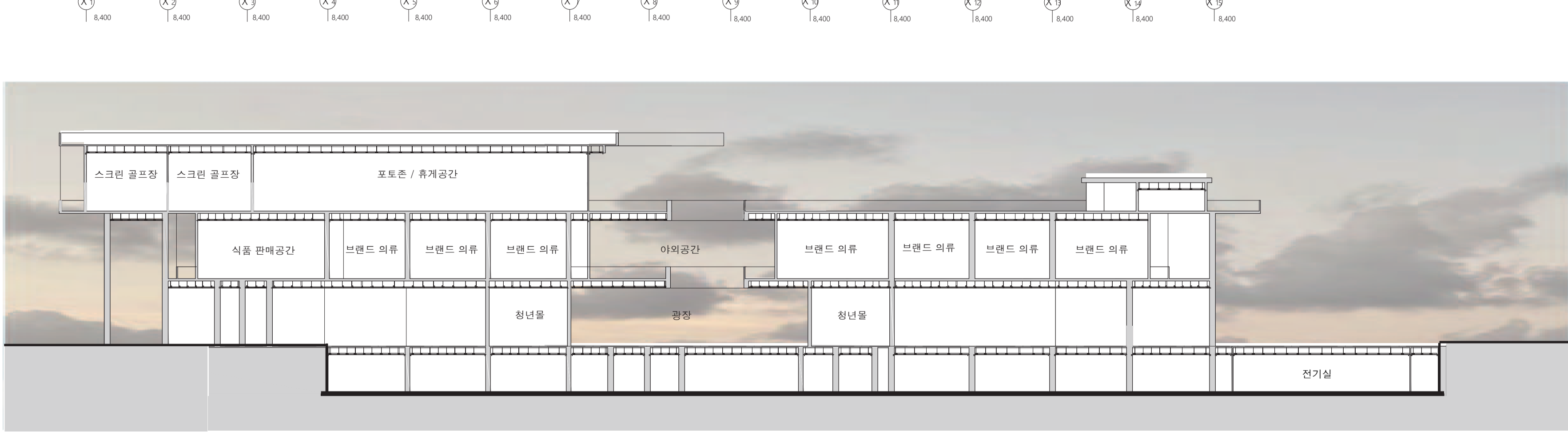


3RD FLOOR PLAN



ROOF FLOOR PLAN

SECTION SCALE 1/500



ELEVATION SCALE 1/500

