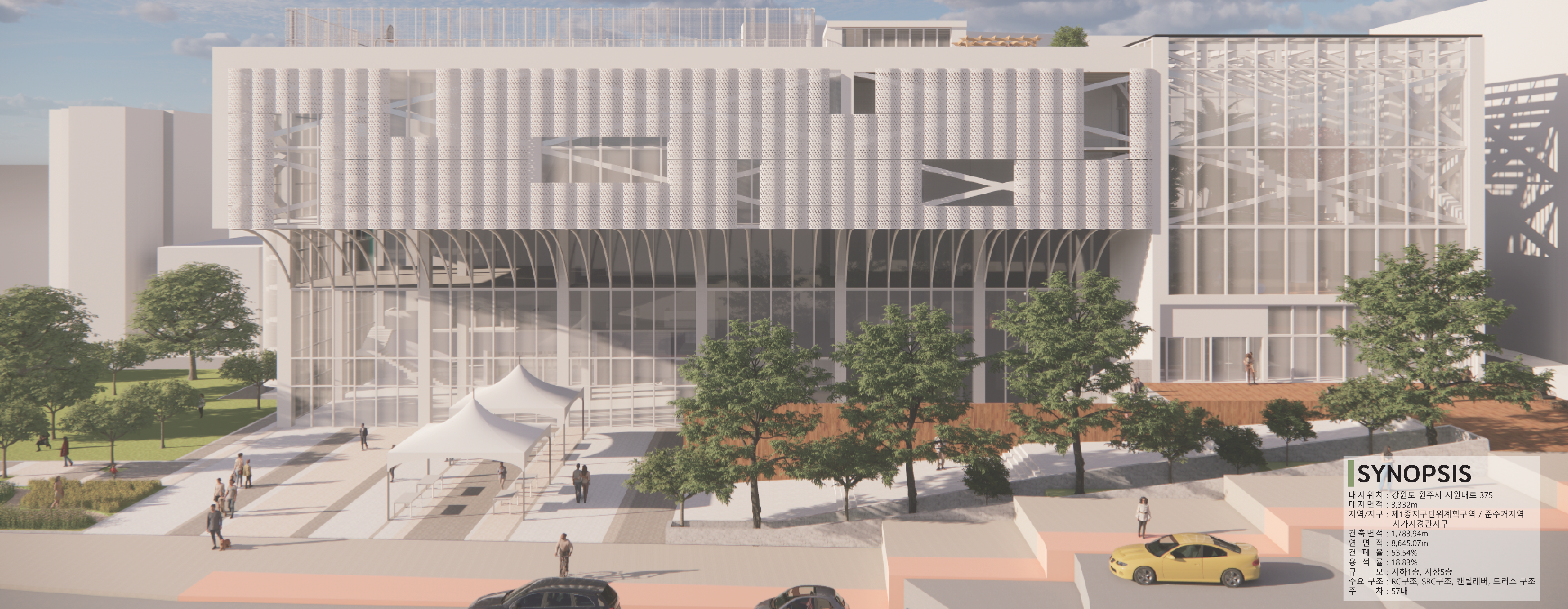


TEENAGER GREENBELT

Wonju Teenager Cultural Facility



SYNOPSIS

대지위치 : 강원도 원주시 서원대로 375
 대지면적 : 3,332㎡
 지역/지구 : 제1종지구단위계획구역 / 준주거지역
 시가지경관지구
 건축면적 : 1,783.94㎡
 연면적 : 8,645.07㎡
 건폐율 : 53.54%
 용적률 : 18.83%
 주요 구조 : RC구조, SRC구조, 캔틸레버, 트러스 구조
 층수 : 5대

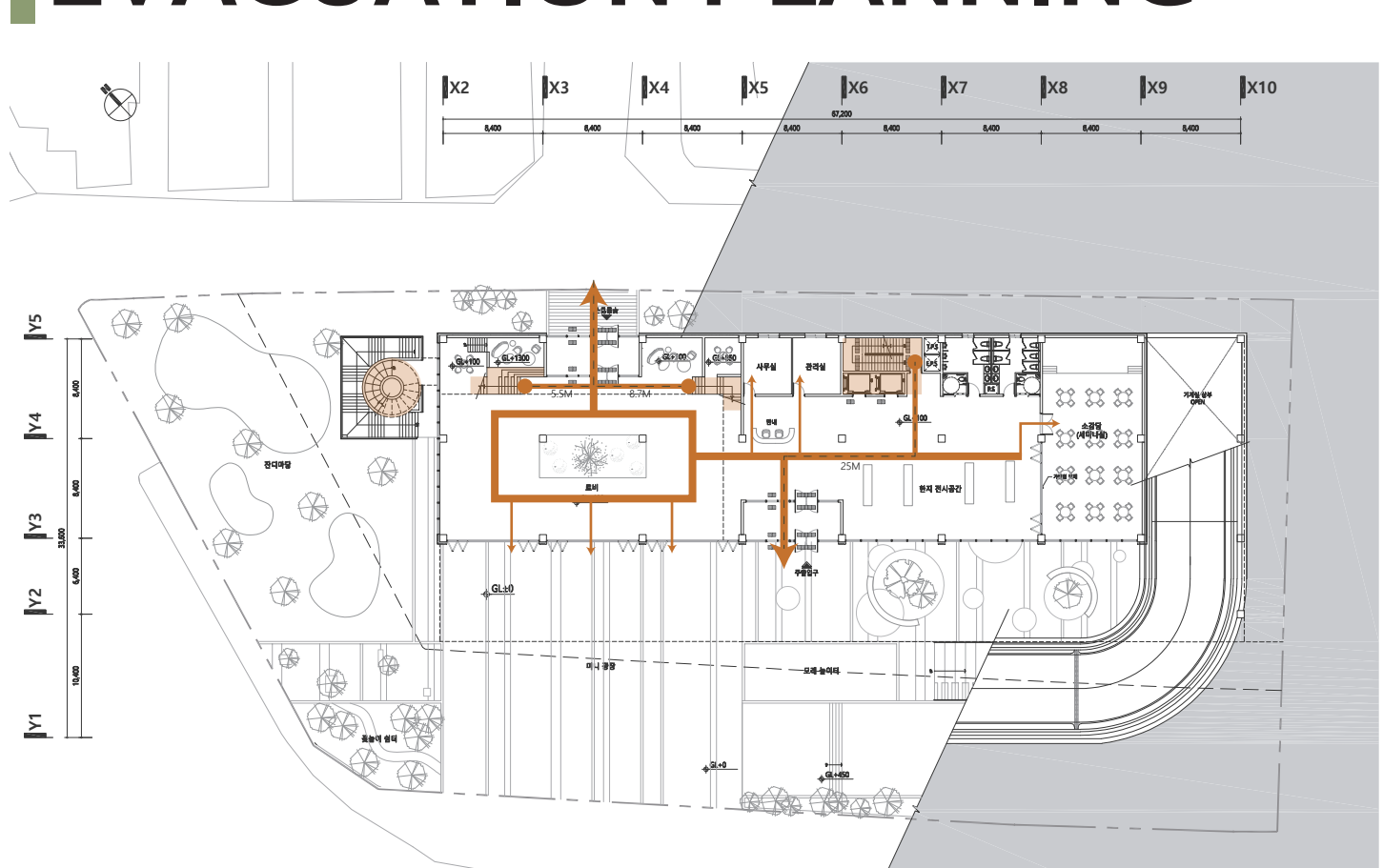
PROLOGUE

- Creating a social atmosphere to develop the potential abilities of adolescents with infinite possibilities and capabilities and to grow healthy is an important task for a society.
- It proposes the idea of space composition considering youth cultural characteristics and a space that can satisfy the social and cultural needs of teenagers and become a vitality of the community.

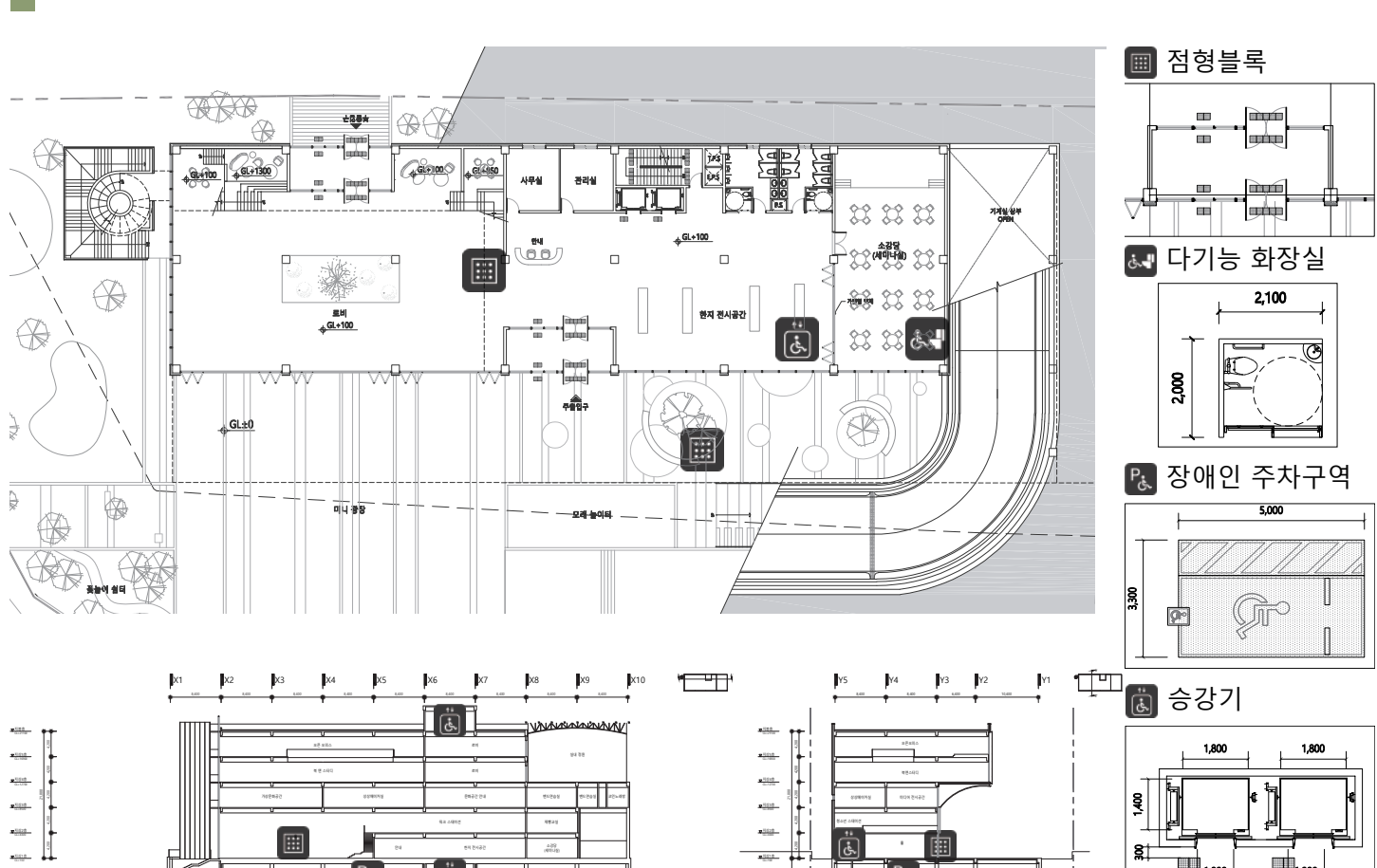
BACKGROUND

- Adolescents are recognized as subjects that will lead the future of society, and developing their cultural, artistic, and creative abilities is recognized as an important social goal, but in modern society, teenagers often lack free time due to academic pressure and various activities outside of school.
- Accordingly, it provides places and opportunities for teenagers to engage in interesting activities so that they can use their free time more meaningfully.
- In addition, adolescence is a period of great physical, emotional, and cognitive changes, and a space is needed to help them discover and develop their potential.

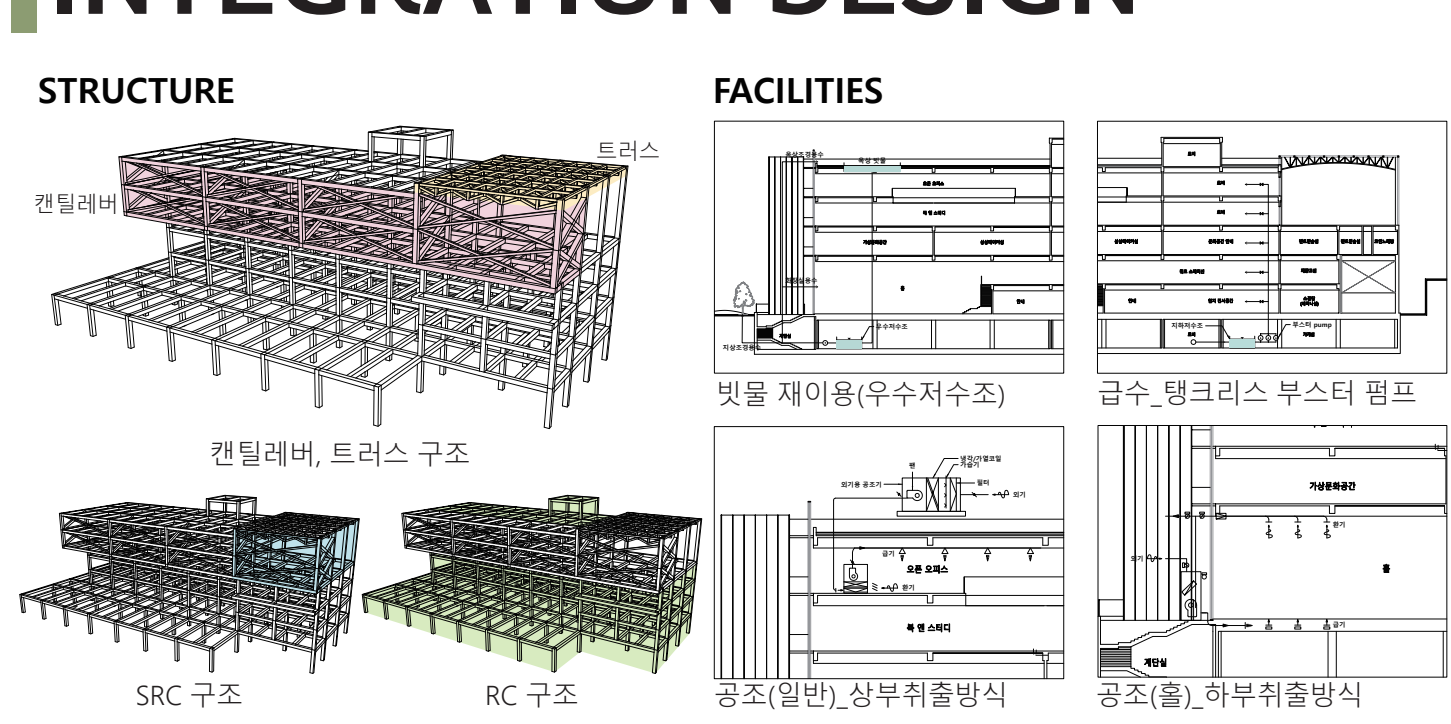
EVACUATION PLANNING



BARRIER FREE DESIGN



INTEGRATION DESIGN



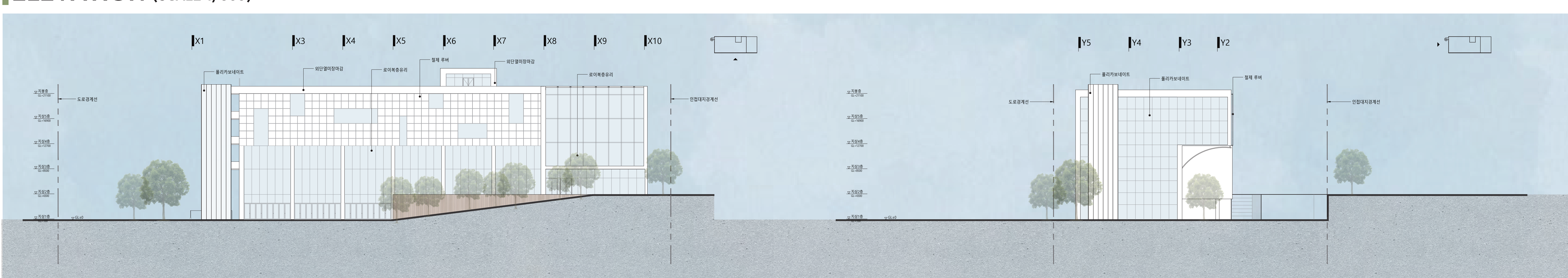
SUSTAINABLE DESIGN



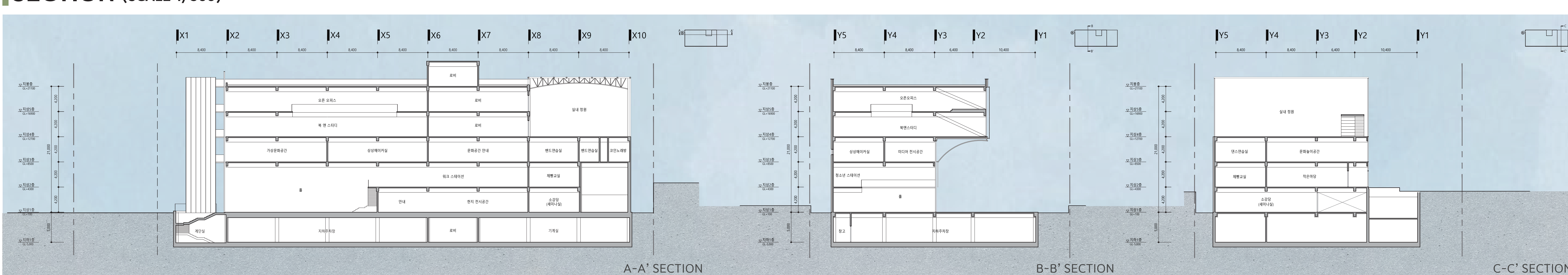
PERSPECTIVE



ELEVATION (SCALE:1/300)



SECTION (SCALE:1/300)



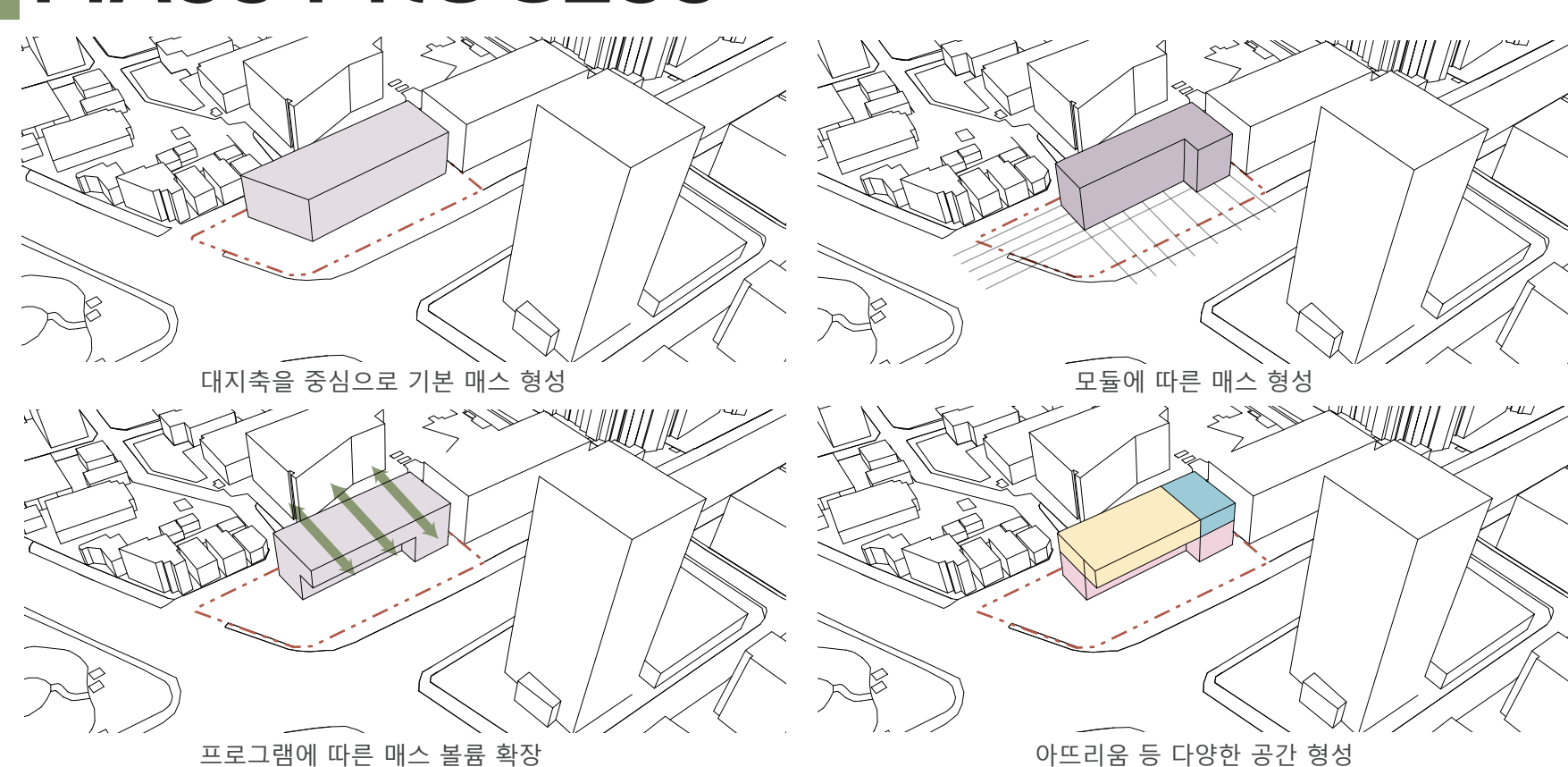
SITE ANALYSIS



LAND USE PLANNING



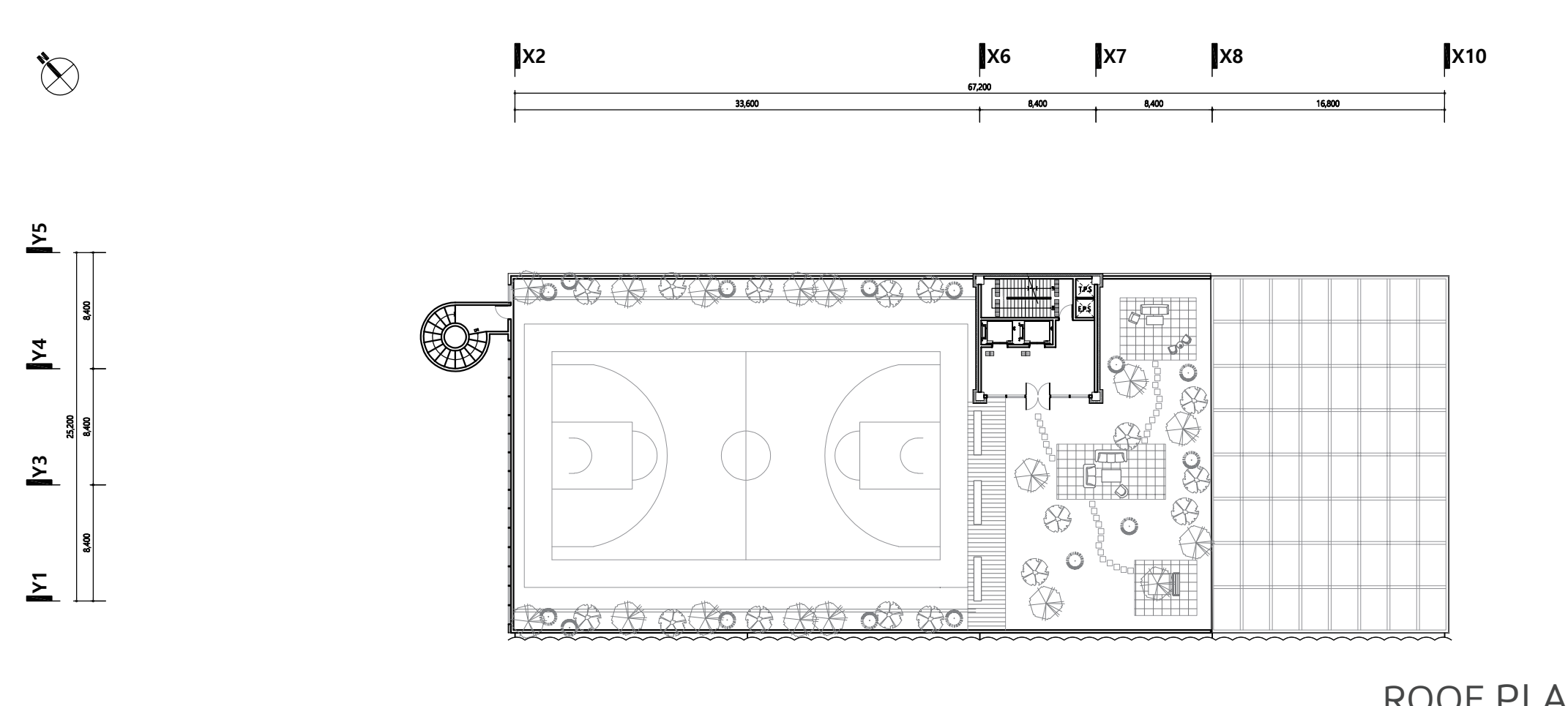
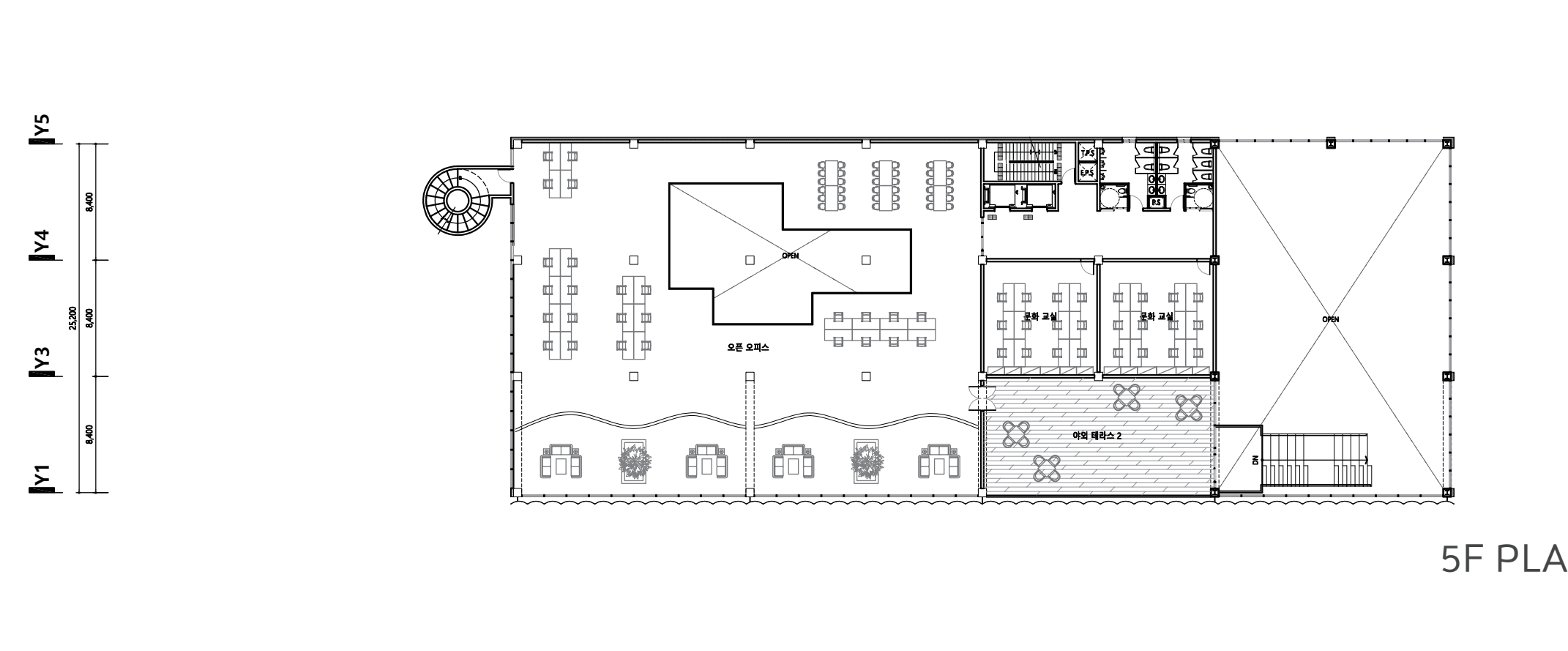
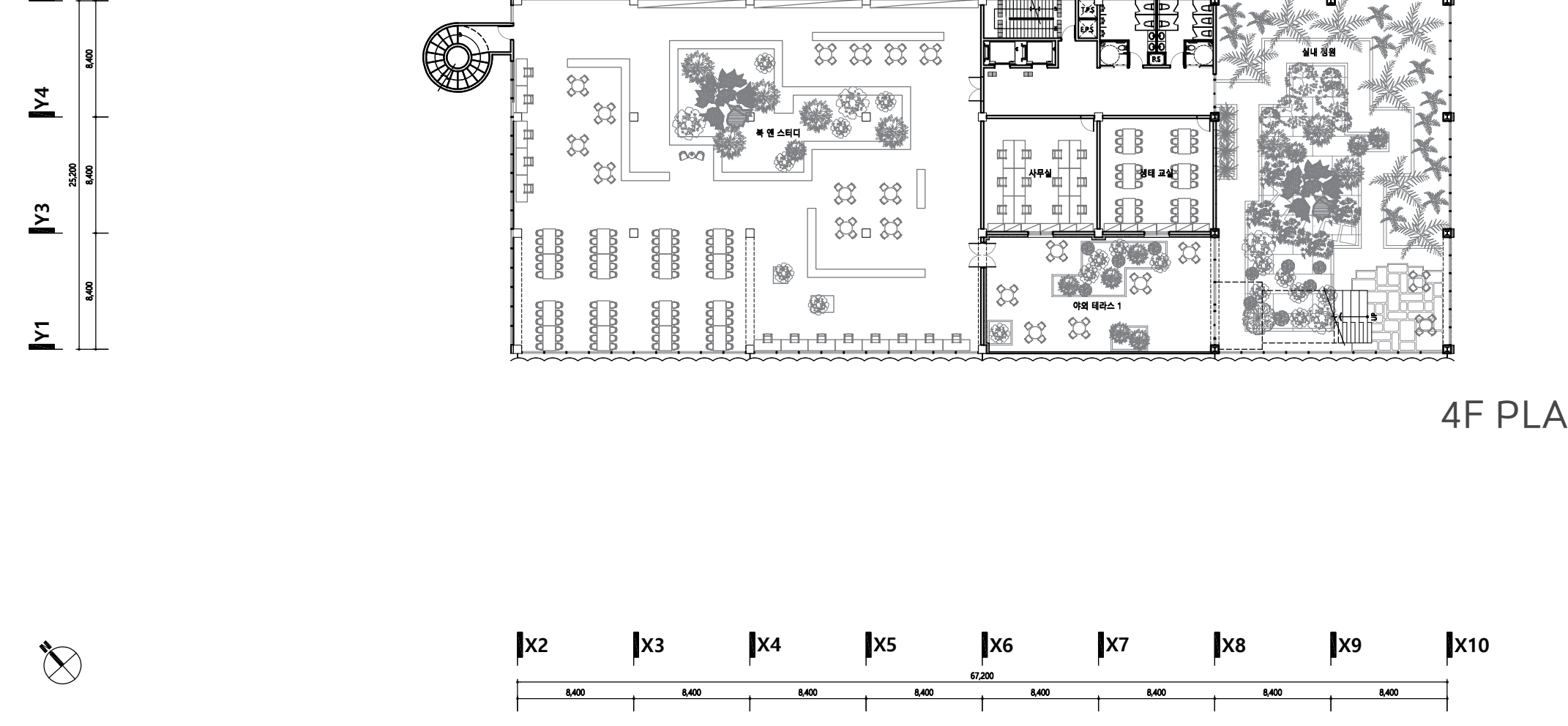
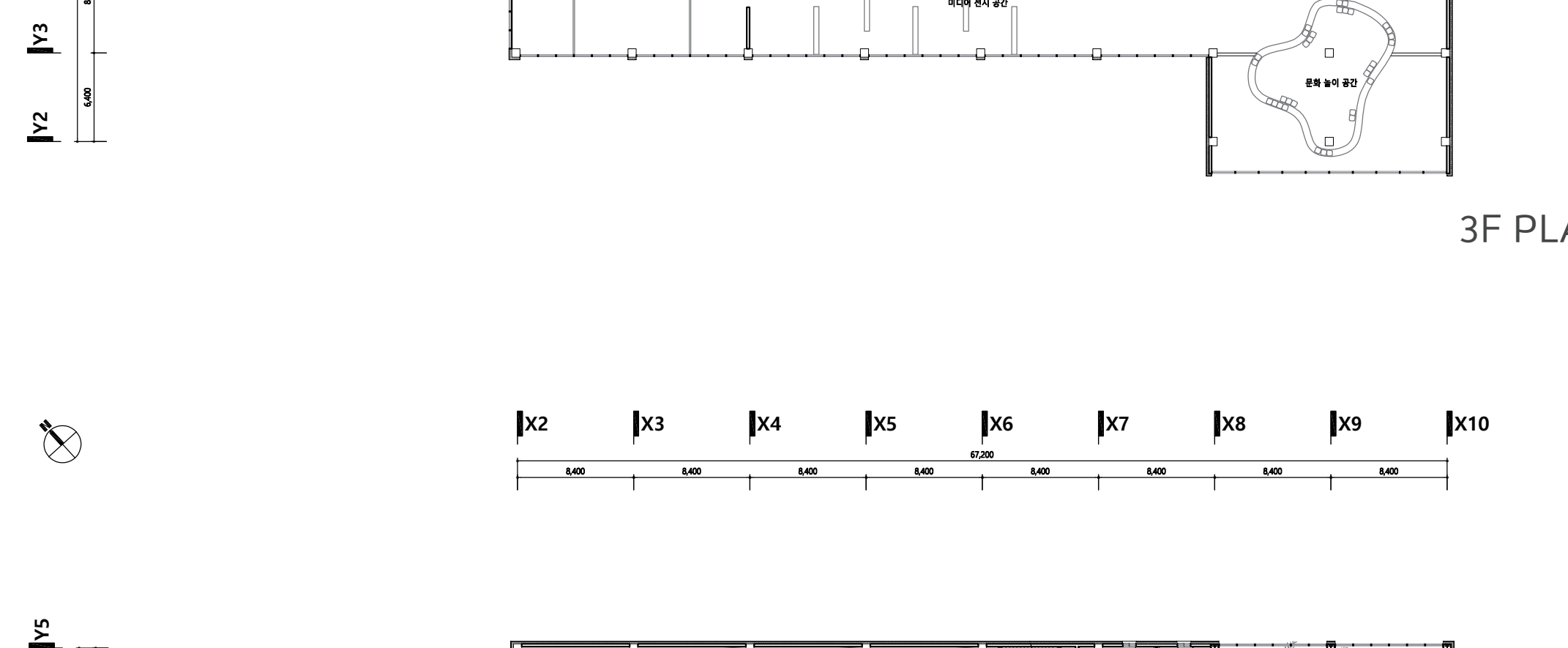
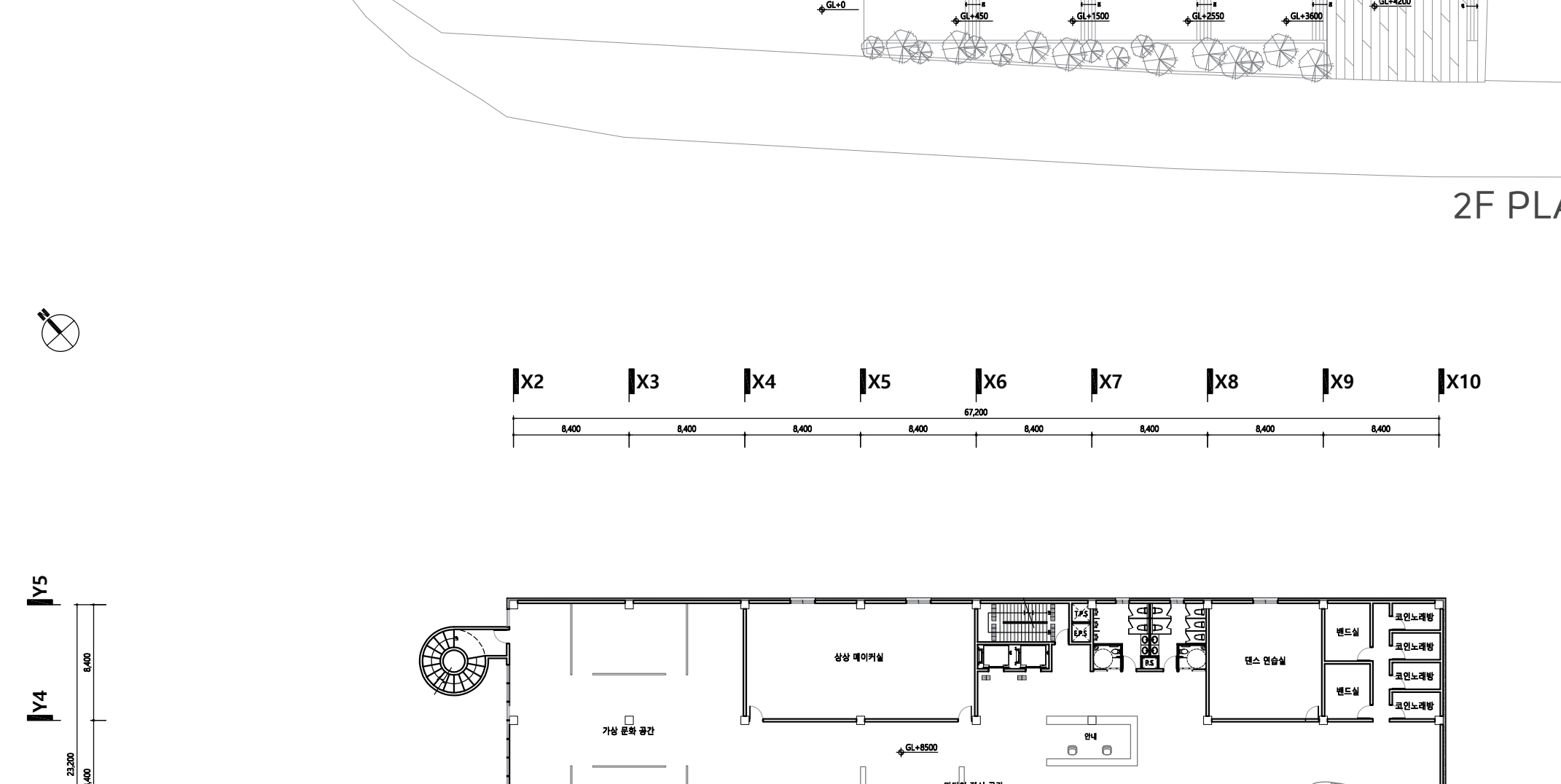
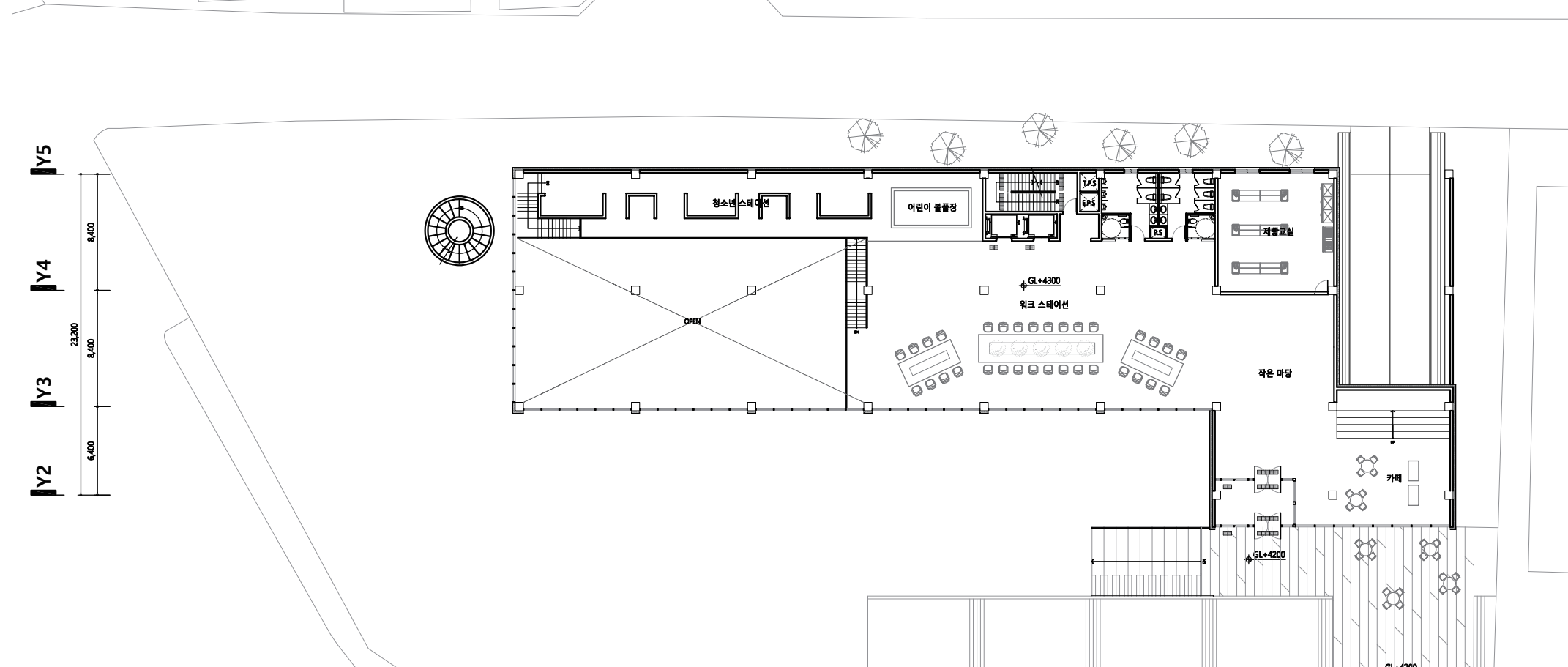
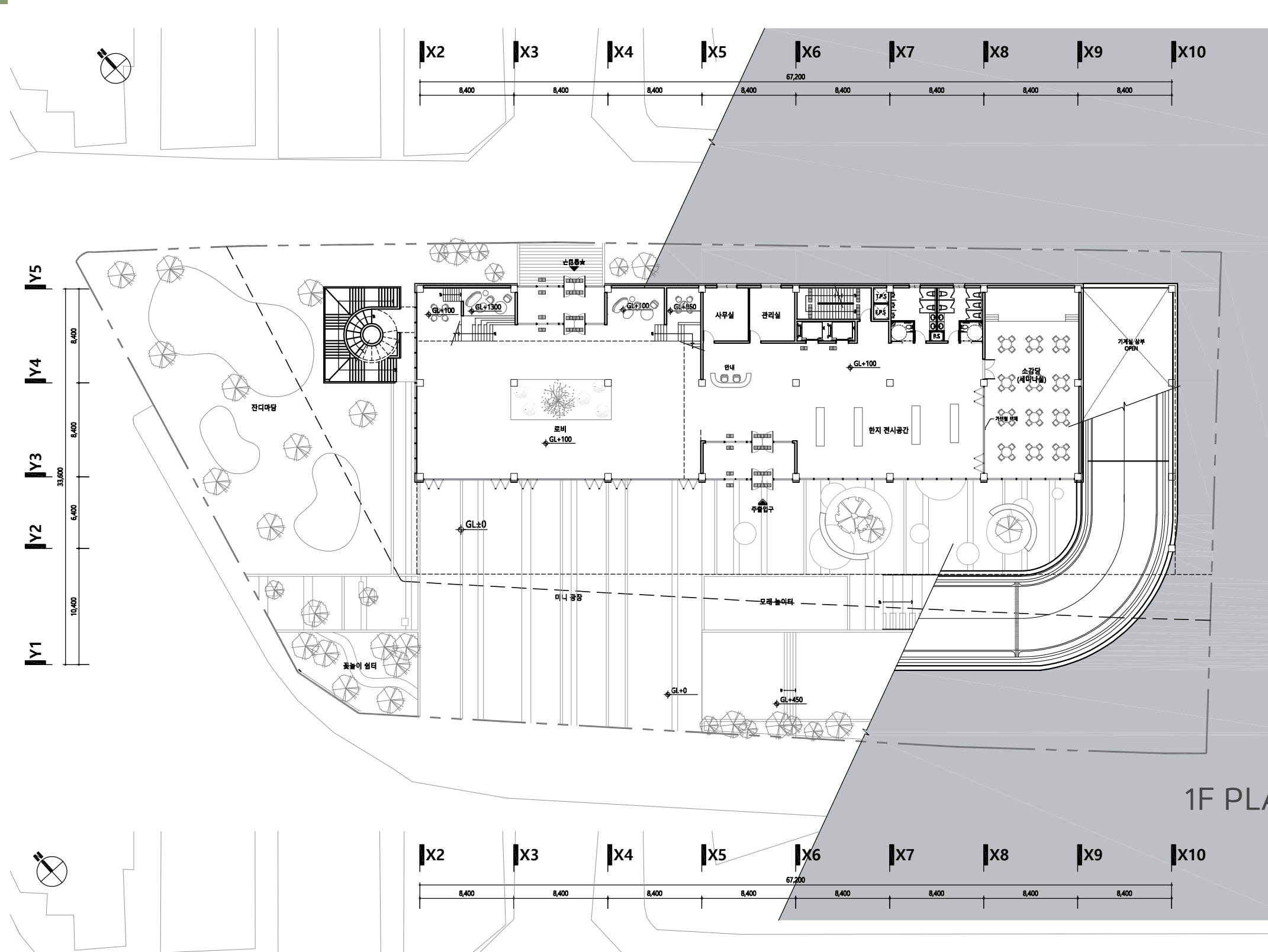
MASS PROCESS



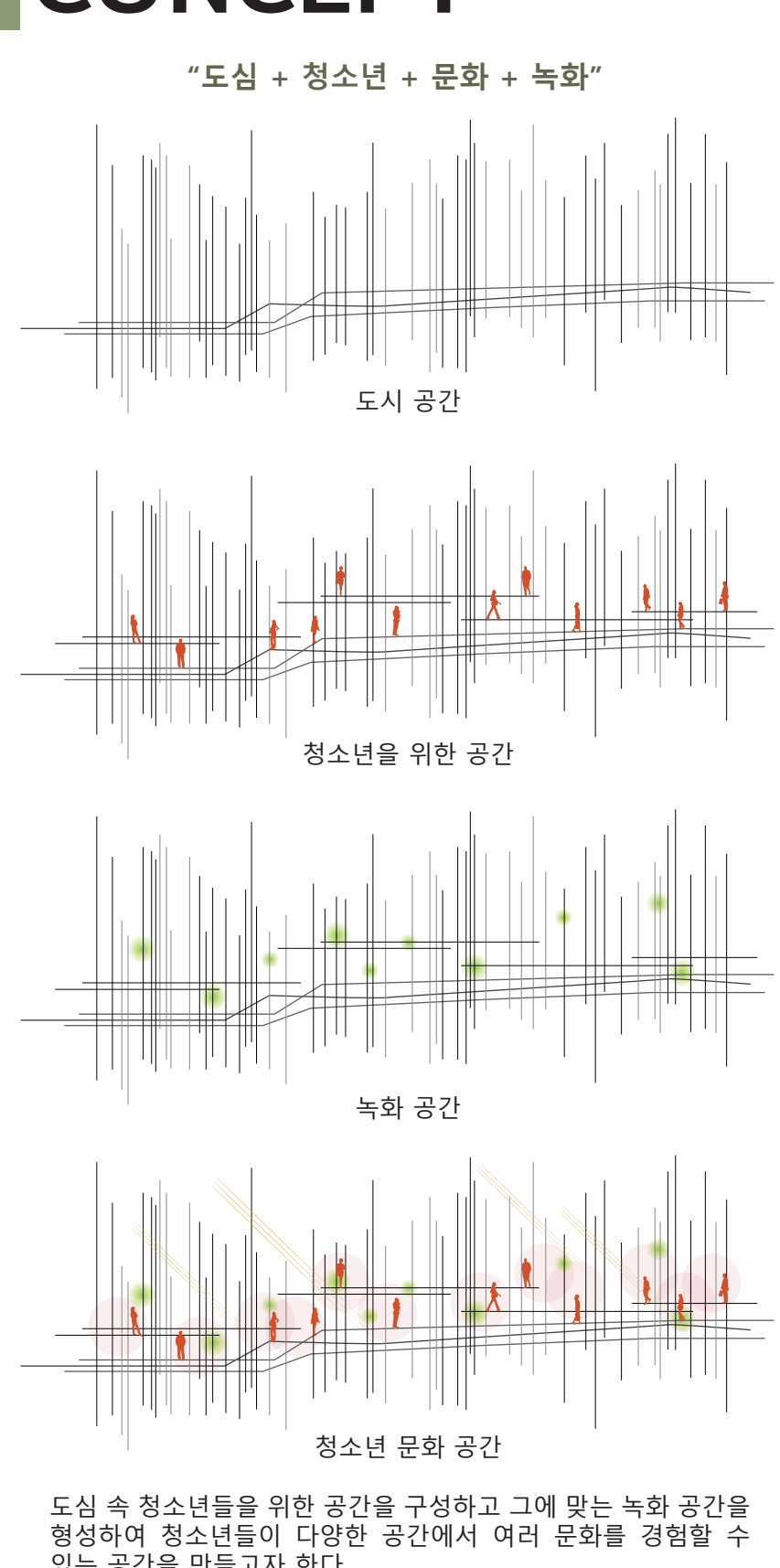
SITE PLAN (SCALE:1/500)



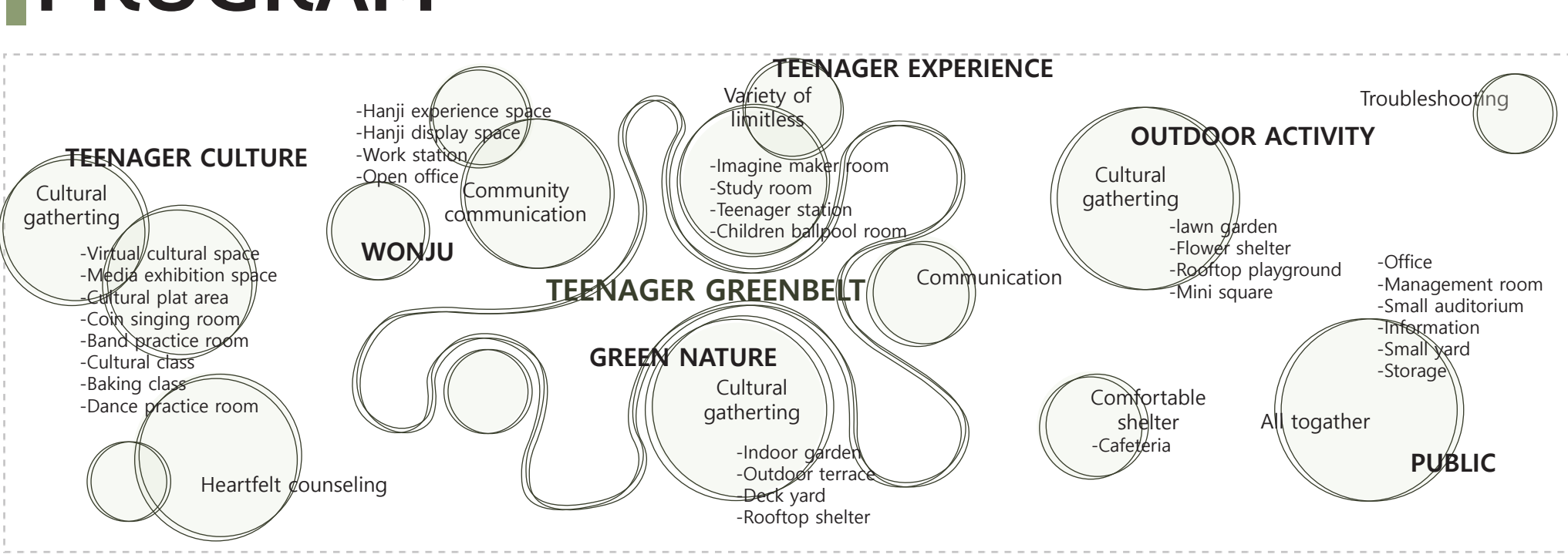
PLAN (SCALE:1/400)



CONCEPT



PROGRAM



SECTION DIAGRAM

